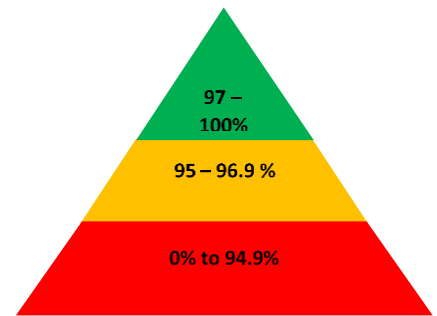


# HOPE

COMMUNITY SCHOOL  
SOUTHAMPTON

## Newsletter

### 4<sup>th</sup> March 2022



### Important dates

#### March

15<sup>th</sup> & 17<sup>th</sup> - Parents evening  
 17<sup>th</sup> - Explorers to Winchester  
 Science Centre  
 18<sup>th</sup> - Red nose day  
 29<sup>th</sup> - Discoverers to Marwell Zoo

#### April

8<sup>th</sup> - End of term, school close early  
 11<sup>th</sup>-22<sup>nd</sup> - Easter Holidays  
 25<sup>th</sup> - Inset day – School Closed  
*It will be week 1 on the lunch menu next week*



## PARENTS EVENING



Parents Evening is coming up on **Tuesday 15<sup>th</sup>** and **Thursday 17<sup>th</sup> March**. Letters will be sent out soon please reply with the times you wish to see the class teachers. The teachers will contact you with an exact time and which day it will be.

### Christian value of our fortnight

This week children have been thinking of the value of “**Creativity**” we have chosen the symbol of the world to remind us that God made the world and he wants us to creatively make the world a better place



### This week's Lovely Hat winners

|             |          |
|-------------|----------|
| Innovators  | Mohammed |
| Discoverers | Toshiro  |
| Green Adv   | Alex     |
| Blue Adv    | Jolie    |
| Explorers   | Maya     |
| Pioneers    | Daniel   |

### INSET DAYS

**25<sup>th</sup> April**



## Year 1 had a Fire fighters to visit

We learned about fire safety and how to get help if needed.

We learned how to check our smoke detectors and practiced our addresses so we when we call for help they know where we are.

We also learned a poem “**matches and lighters never touch, they can hurt you very much**”.

## SAFEGUARDING CORNER



Today in our safeguarding section we wanted to let you know about a really helpful website.

It is the NSPCC website -

<https://www.nspcc.org.uk/keeping-children-safe/support-for-parents/>

If you go to the main site and then click on "Keeping Children Safe" there is a section called "Support For Parents."

There is lots of very useful information about all aspects of life with children from baby parenting to working from home to mental health.



## CoCo Came to Visit This week

We got to see the lovely Coco (Mrs Rodgers dog). She was very happy to be here and meet the children and staff, We asked questions about Coco such as

What does she eat? How does she play? Does she have baths?

We even got to watch her catch a ball and bring it back.

## School Attendance Matters!



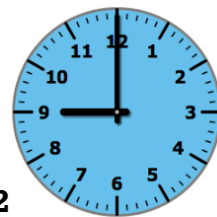
### Week Beginning 14<sup>th</sup> February 2022

|                          |              |
|--------------------------|--------------|
| <b>Innovators</b>        | <b>95.8%</b> |
| <b>Discoverers</b>       | <b>87.2%</b> |
| <b>Blue Adventurers</b>  | <b>93.5%</b> |
| <b>Green Adventurers</b> | <b>90.6%</b> |
| <b>Explorers</b>         | <b>90.0%</b> |
| <b>Pioneers</b>          | <b>92.9%</b> |

Whole School **91.6%**

**Well Done INNOVATORS**

## Lateness



### Week Beginning 14<sup>th</sup> February 2022

|                          |                        |
|--------------------------|------------------------|
| <b>Innovators</b>        | <b>1 child late</b>    |
| <b>Discoverers</b>       | <b>2 children late</b> |
| <b>Blue Adventurers</b>  | <b>3 children late</b> |
| <b>Green Adventurers</b> | <b>2 children late</b> |
| <b>Explorers</b>         | <b>1 children late</b> |
| <b>Pioneers</b>          | <b>2 child late</b>    |

Last week there were **16 instances** of lateness by **11 children** and **4 hours and 10 minutes** of learning time were lost due to lateness.

Please remember that you must inform us if your child is unwell and is unable to attend school. Please contact us before 9:15am. You can phone us 023 80 385122, use the ParentMail app or email us at

[southampton@hopecommunityschool.org](mailto:southampton@hopecommunityschool.org)

**Please remember good attendance and punctuality are really important!**

Hope Community School

Central Hall, St Mary Street, Southampton, SO14 1NF

Principal: Mr Steve Wright

Tel: 02380 385122

E: [Southampton@hopecommunityschool.org](mailto:Southampton@hopecommunityschool.org) W: [www.hopecommunityschool.org](http://www.hopecommunityschool.org)