

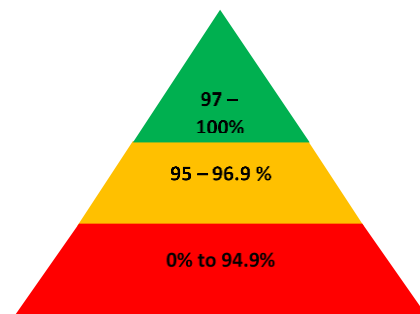


# HOPE

COMMUNITY SCHOOL  
SOUTHAMPTON

## Newsletter

### 26<sup>th</sup> November 2021



#### Important dates

##### December

1<sup>st</sup> – Year 2 trip to the Seacity museum.

16<sup>th</sup> – Year R trip to Mayflower theatre

17<sup>th</sup> – Last day of term – **school close early more details to follow**

##### January

4<sup>th</sup> – Inset day, School Closed

5<sup>th</sup> – First day of spring term

*It will be week 2 on the lunch menu next week*

**Countdown to Christmas** - We are planning ahead for Christmas and have many exciting events for the children to look forward to.

1 <sup>st</sup> December	Christmas Post-boxes Please write names/classes clearly on envelopes
10 <sup>th</sup> December	Festive Lunch and Christmas Jumper Day
13 <sup>th</sup> December	Kings Chamber Orchestra Year R, Year 1 and Year 2 (bring a cuddly toy)
15 <sup>th</sup> December	Year R and 1 Christmas performance – 9.30am
15 <sup>th</sup> December	Year 2 Christmas performance – 11.30am
15 <sup>th</sup> December	Year 3 & 4 Christmas performance – 2.30pm
17 <sup>th</sup> December	Last day term – school closed early details to follow

#### Christian value of our fortnight

This week children have been learning about the Christian value of 'honour' which is letting someone know how valuable they are.

This week children have continued to think about honour, and in particular how to decide what is valuable. They have considered the difference in value between material things and people.

#### This week's Lovely Hat winners

Innovators	Rosalia
Discoverers	Shanayah
Green Adv	Hadil
Blue Adv	Eliza
Explorers	Mateus
Pioneers	Khadija

#### INSET DAYS

**4<sup>th</sup> January**

**25<sup>th</sup> April**



Follow the trail through the North Pole, South Pole or both, on an adventure around the twinkling city centre. Look out for penguins and polar bears on your way, they will show you the clues. Find all the clues and unscramble the festive phrases to claim your free prizes.

We will be sending home with children the trail maps next week. Or they can be found using the link below -

<https://visitsouthampton.co.uk/christmas-trail>

Thank you to the children and families for their Children In Need donations, as a school we raised **£172.20!**



## Parents and carers attending the Christmas performances in December

In order to try and reduce transmission of COVID please do not attend if you have any COVID symptoms.

We would like to ask parents to do a lateral flow test before attending as a precaution and we kindly ask you to wear a face mask if possible.

Please arrive at the main glass doors 10 minutes prior to your child's performance. We will space parents out within the hall.

We will have a review of our risk assessment 10 days before the performance to make sure it is okay to continue.

## School Attendance Matters!



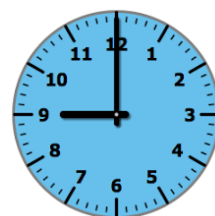
### Week Beginning 15<sup>th</sup> November

<b>Innovators</b>	<b>94.1%</b>
<b>Discoverers</b>	<b>96.6%</b>
<b>Blue Adventurers</b>	<b>95.6%</b>
<b>Green Adventurers</b>	<b>92.3%</b>
<b>Explorers</b>	<b>96.2%</b>
<b>Pioneers</b>	<b>91.6%</b>

Whole School **94.5%**

**Well Done Discoverers!**

## Lateness



### Week Beginning 15<sup>th</sup> November

<b>Innovators</b>	<b>1 child late</b>
<b>Discoverers</b>	<b>4 children late</b>
<b>Blue Adventurers</b>	<b>5 children late</b>
<b>Green Adventurers</b>	<b>3 children late</b>
<b>Explorers</b>	<b>2 children late</b>
<b>Pioneers</b>	<b>1 child late</b>

Last week there were **31 instances** of lateness by **16 children** and **12 hours and 12 minutes** of learning time were lost due to lateness.

Please remember that you must inform us if your child is unwell and is unable to attend school. Please contact us before 9:15am. You can phone us 023 80 385122, use the ParentMail app or email us at [southampton@hopecommunityschool.org](mailto:southampton@hopecommunityschool.org)

**Please remember good attendance and punctuality are really important!**

Hope Community School  
Central Hall, St Mary Street, Southampton, SO14 1NF  
Principal: Mr Steve Wright  
Tel: 02380 385122  
E: [Southampton@hopecommunityschool.org](mailto:Southampton@hopecommunityschool.org)  
W. [www.hopecommunityschool.org](http://www.hopecommunityschool.org)