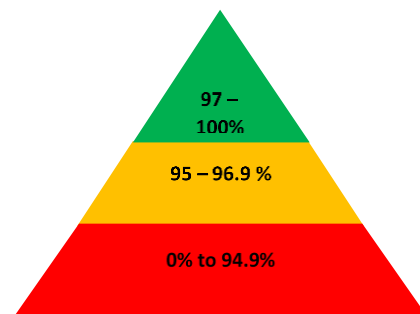




Newsletter

24th September 2021



Important dates

Sept

30th – Year 3 trip to Stonehenge

October

1st – Inset day **school closed**

14th – Flu Immunisations

25th- 29th – HALF TERM

November

1st - Pupil photos

It will be week 3 on the lunch menu next week.

Flu Immunisations are due to take place on **Thursday 14th October**. This is for all primary aged children.

This year the registration form is being done electronically. A ParentMail message was sent last Wednesday providing the E-link and unique session code you need to register your child. Without parental consent your child will not be able to receive their immunisation.

If you require any help with this please email or call the school office.

Christian value of our fortnight

This week children have been learning about the Christian value of 'creativity' which is using your imagination to do something unique.

This week the children have been thinking about how people can be creative when faced with a problem. They found out about some people who, despite having physical disabilities managed to find things that they could excel at. They also considered the famous fable – the Lion and the Mouse – and considered how the Lion realised how valuable even a tiny mouse can be. Sometimes we need to change the way we think about things (or be creative) in order to find solutions to problems.

This week's Lovely Hat winners

Innovator – Michal

Discoverer – Phebe

Blue Adventurer – Kobe

Green Adventurer – Daniel

Explorer – Kian

Pioneer – Rachel

INSET DAYS

1st October

4th January

25th April

Explorers are going to Stonehenge on Thursday 30th September. Explorers need to wear full school uniform and wear sensible footwear. They also need to bring a raincoat, a backpack and a water bottle. Unless you have requested a school packed lunch, children need to bring a packed lunch. Children will be leaving promptly at 9am so it is essential that they arrive to school on time. They are going to have a fantastic time.

Please can we remind you were are a nut free school. Children who suffer from nut allergies can develop a severe, potentially life-threatening allergic reaction.



Year R Innovators

Please return your child's school nurse consent form, for the National child measurement programme.



School Attendance Matters!



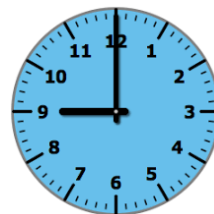
Week Beginning 13th September

Innovators	87.5%
Discoverers	96.7%
Blue Adventurers	99.1%
Green Adventurers	98.3%
Explorers	97.2%
Pioneers	97.3%

Whole School **97.6%**

Well Done Blue Adventurers!

Lateness



Week Beginning 13th September

Innovators	0 children late
Discoverers	0 children late
Blue Adventurers	3 children late
Green Adventurers	3 children late
Explorers	2 children late
Pioneers	0 children late

Last week there were 9 instances of lateness by 8 children and **4 hours and 47 minutes** of learning time were lost due to lateness.

Please remember that you must inform us if your child is unwell and is unable to attend school. Please contact us before 9:15am. You can phone us 023 80 385122, use the ParentMail app or email us at southampton@hopecommunityschool.org

Please remember good attendance and punctuality are really important!

Hope Community School
Central Hall, St Mary Street, Southampton, SO14 1NF
Principal: Mr Steve Wright
Tel: 02380 385122
E: Southampton@hopecommunityschool.org
W. www.hopecommunityschool.org