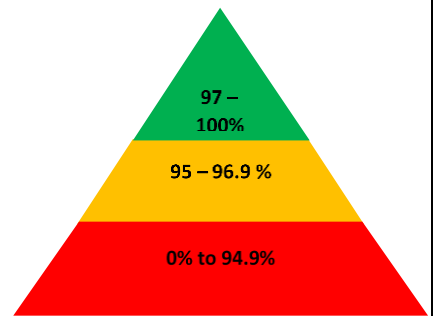


HOPE

COMMUNITY SCHOOL
SOUTHAMPTON

Newsletter

16th July 2021



Important dates

July

19th – School report sent home

23rd – Last day of school celebration school menu

School closes at 13:30. End of summer term.

Sept

2nd & 3rd – Inset days

6th – First day back at school after summer holidays

Next week is week 1 on the lunch menu.

After school clubs will take place next week straight after school to 4.15pm

Monday 19th

Year 1 Gymnastics Club

Wednesday 21st

Year 1 Singing club

Year 1 Football club

Year 2 & 3 Gymnastics

Year 2 & 3 Art Club

Year 2 & 3 Dance club

Christian value of our fortnight

This week children have been learning about the Christian value of 'gentleness' which is using words and actions that make others feel cared for and special.

Even though children have been at home this week they have still been busy! Mrs. Lowry shared collectives about gentleness, staying calm and reflecting on learning. As part of Health and Safety week Mrs. Chart set an online safety challenge with a prize and all of the children have been learning about road safety. Children also thought about a story in the bible in which Jesus showed gentleness towards children by giving them his time.

This week's Lovely Hat winners

Discoverer – Phebe

Red Adventurer – India

Yellow Adventurer – Karolina

Explorer – Lucius

Pioneer – Zane

Please see details of a wonderful scheme. Please note this is just for families living in the SO14 postcode. If you need any help, please email us.

The Marketplace at Saint Mary's is a new membership food project providing access to affordable, fresh, healthy food in a friendly and supportive environment.

For £5 per week, members can choose from at least 15 items from a range of fresh, refrigerated, frozen and ambient goods. Membership is open to anyone with a SO14 postcode.

When:
Thursdays 10am - 2pm

Where:
Saint Mary's Church,
St Marys Street, SO14 1AQ

Contact:
saintmarysmarketplace@
southamptoncitymission.co.uk
for more info or visit
saintmaryschurch.org/marketplace



Communication

Whilst teachers use Class Dojo, all other communication is sent via ParentMail. Therefore it is essential that you can access ParentMail. There is a free app which allows messages to come through to your phone and it also emails you. If you are having problems accessing ParentMail, this link will help you:

<https://www.parentmail.co.uk/help/parenthelp/parentmail-app/app-faqs/>

If you need support of any kind over the holidays we have been that you can visit either of our local Sure Start Centres:
Sure Start Central 60-68 Clovelly Road 02380 331635

Sure Start Swaythling Honeysuckle Road
02380 833552

Also you can self refer to Early Help for support using the following link:

<https://www.southampton.gov.uk/health-social-care/children/child-social-care/early-help/>

Please don't suffer in silence – the support is there.

School Attendance Matters!

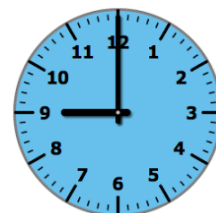


Week Beginning 5th July

Discoverers	89.0%
Red Adventurers	96.8%
Yellow Adventurers	97.6%
Explorers	86.4%
Pioneers	85.8%
 Whole School	 91.4%

Well Done Yellow Adventurers!

Lateness



Week Beginning 5th July

Discoverers	2 children late
Red Adventurers	4 children late
Yellow Adventurers	3 children late
Explorers	1 child late
Pioneers	1 child late

Last week there were 11 instances of lateness by 11 children and **2 hours 53 minutes** of learning time were lost due to lateness.

Please remember that you must inform us if your child is unwell and is unable to attend school. Please contact us before 9:15am. You can phone us 023 80 385122, use the ParentMail app or email us at

southampton@hopecommunityschool.org

Please remember good attendance and punctuality are really important!

Hope Community School

Central Hall, St Mary Street, Southampton, SO14 1NF

Principal: Mr Steve Wright

Tel: 02380 385122

E: Southampton@hopecommunityschool.org

W. www.hopecommunityschool.org