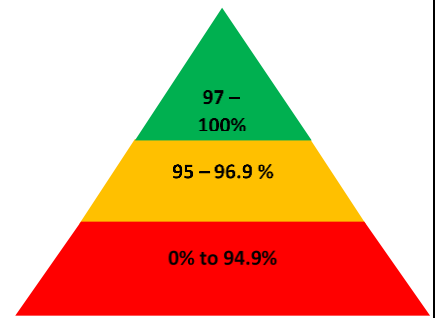


# HOPE

COMMUNITY SCHOOL  
SOUTHAMPTON

## Newsletter

### 2<sup>nd</sup> July 2021



#### Important dates

##### July

5<sup>th</sup> – Children find out their new teacher, message will be sent on ParentMail.

5<sup>th</sup> - New Year R phonic Information- 11am **ONLINE VIA ZOOM**

6<sup>th</sup> – Deadline for ordering class photographs

7<sup>th</sup> – Meet new class teacher – Transition morning

9<sup>th</sup> – School report sent home

13<sup>th</sup> – Second hand uniform at playground gate at morning drop off – all items £1 going towards educational items for the children.

23<sup>rd</sup> – Last day of school celebration school menu (details to follow) **School closes at 13:30.** End of summer term.

##### Sept

2<sup>nd</sup> & 3<sup>rd</sup> – Trust inset days

6<sup>th</sup> – First day back at school after summer holidays

*Next week is week 2 on the lunch menu.*

Please be advised if you have NOT yet placed your class photograph order, the order closing date is Tuesday 6<sup>th</sup> July. Please either return your order to the school or visit [www.smileyellow.com](http://www.smileyellow.com) using the passwords on the Proof card.

#### Christian value of our fortnight

This week children have been learning about the Christian value of 'responsibility' which is showing you can be trusted with what's expected of you.

They have thought about what sorts of things they are responsible for and how important it is to take responsibility for our actions. They also considered how they could take more responsibility for thing in other aspects of their life.

#### This week's Lovely Hat winners

**Discoverer – Salem**

**Red Adventurer – Daniel**

**Yellow Adventurer – Nma**

**Explorer – Love**

**Pioneer – Zher**

**On 13<sup>th</sup> July we are having a second hand uniform at the playground gate at morning drop off - all items £1 with monies going towards educational items for the children.**



## Southampton's Mental Health in Schools Team

Our Family Liaison officer Claire Rodgers and Jo McLachlan our designated trainee Educational Mental Health Practitioner have teamed up to support the mental health and wellbeing of pupils. We typically provide support for anxiety, worry, low mood and/or behavioural difficulties. This is a link to a short video which explains the work we do in more detail:

<https://www.youtube.com/watch?v=BALKNvAnDXg>

Please do contact the school if this is something you wish to discuss further in supporting your child.

## Reminders and Requests

### Symptoms of COVID-19



**If you have any of these symptoms, get tested**

Please do not send your child into school **if they are or anyone in your household displays any COVID-19 Symptoms**. The symptomatic household member must book a test <https://www.gov.uk/get-coronavirus-test>. Please inform the school of the child's absence.

## School Attendance Matters!



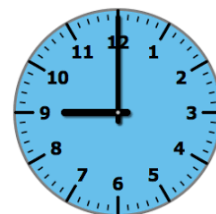
### Week Beginning 21<sup>st</sup> June

<b>Discoverers</b>	<b>91.6%</b>
<b>Red Adventurers</b>	<b>97.6%</b>
<b>Yellow Adventurers</b>	<b>99.5%</b>
<b>Explorers</b>	<b>95.3%</b>
<b>Pioneers</b>	<b>92.1%</b>

**Whole School 95.2%**

**Well Done Yellow Adventurers!**

## Lateness



### Week Beginning 21<sup>st</sup> June

<b>Discoverers</b>	<b>4 children late</b>
<b>Red Adventurers</b>	<b>3 children late</b>
<b>Yellow Adventurers</b>	<b>2 children late</b>
<b>Explorers</b>	<b>2 children late</b>
<b>Pioneers</b>	<b>2 children late</b>

Last week there were 17 instances of lateness by 13 children and **3 hours and 36 minutes** of learning time were lost due to lateness.

Please remember that you must inform us if your child is unwell and is unable to attend school. Please contact us before 9:15am. You can phone us 023 80 385122, use the ParentMail app or email us at

[southampton@hopecommunityschool.org](mailto:southampton@hopecommunityschool.org)

**Please remember good attendance and punctuality are really important!**

Hope Community School

Central Hall, St Mary Street, Southampton, SO14 1NF

Principal: Mr Steve Wright

Tel: 02380 385122

E: [southampton@hopecommunityschool.org](mailto:southampton@hopecommunityschool.org)

W: [www.hopecommunityschool.org](http://www.hopecommunityschool.org)