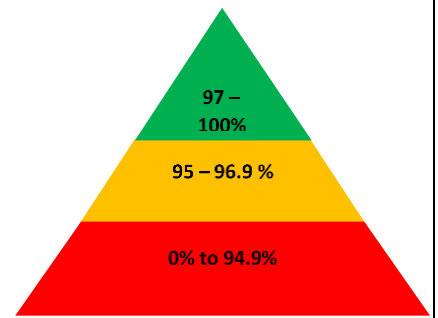


# HOPE

COMMUNITY SCHOOL  
SOUTHAMPTON

## Newsletter

### 25<sup>th</sup> June 2021



#### Important dates

##### June

30<sup>th</sup> - New Year R Stay and Play Transition Afternoons 3.30-4.15pm

##### July

5<sup>th</sup> - New Year R phonic Information- 11am **ONLINE VIA ZOOM**

6<sup>th</sup> - deadline for ordering class photographs

23<sup>rd</sup> - Last day of school celebration school menu (details to follow) **School closes at 13:30**. End of summer term.

*Next week is week 1 on the lunch menu.*

The church are running a fantastic Kintsugi Wellbeing group with the information session this coming Monday 28<sup>th</sup> June for anyone who would like to find out more. Please click on these two links for more information.

<https://youtu.be/OOsYcQqsSJO>

<https://forms.office.com/r/ZkedZgG9LT>

#### Christian value of our fortnight

This week children have been learning about the Christian value of 'responsibility' which is showing you can be trusted with what's expected of you.

We have also been thinking about Diversity as it is Diversity week. In today's collective we looked at the story of creation and how God made everything so different and he was pleased with what he had made. We have considered all of the differences between humans and realised and not a single person is exactly the same! We realised how silly it was to judge people or make people feel bad because they are different whether it is a difference in appearance, belief or who they love.

#### This week's Lovely Hat winners

**Discoverer – Adey**

**Red Adventurer – Troy**

**Yellow Adventurer – Jolie**

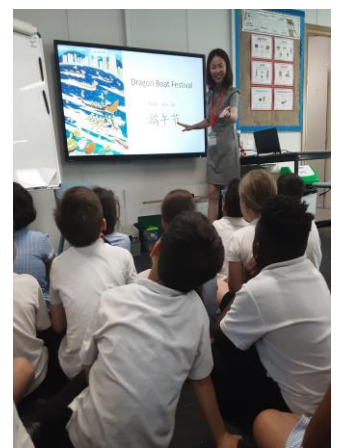
**Explorer – Ibrahim**

**Pioneer – Jasmine**

#### Year 3 Pioneers Mandarin lessons

Hello = 你好  
Ní hao !

Pioneers take mandarin lessons every fortnight with Min from the University of Southampton. They wrote some Chinese characters, coloured and labelled events from the Legend of Qu Yuan and held and smelled some sticky rice dumplings cooked in bamboo leaves



## Year 2 Local Walk

On Wednesday, Explorers went on a local walk to Mayflower park and back again. The purpose of the trip was to explore human and physical geographical features and find out what land is used for and what do people do in Southampton. Miss Patience and Miss Hill were very proud of the way Explorers represented our school out in the local community. Thank you also to the adults who helped out on our trip.



## Reminders and Requests

### Symptoms of COVID-19

New continuous cough

High temperature

Loss of, or change in, sense of taste or smell



**If you have any of these symptoms, get tested**

Please do not send your child into school **if they are or anyone in your household displays any COVID-19 Symptoms**. The symptomatic household member must book a test <https://www.gov.uk/get-coronavirus-test>. Please inform the school of the child's absence.

## School Attendance Matters!

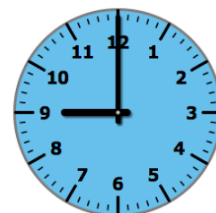


### Week Beginning 18<sup>th</sup> June

<b>Discoverers</b>	<b>95.4%</b>
<b>Red Adventurers</b>	<b>97.3%</b>
<b>Yellow Adventurers</b>	<b>95.2%</b>
<b>Explorers</b>	<b>92.5%</b>
<b>Pioneers</b>	<b>94.7%</b>
<b>Whole School</b>	<b>95.0%</b>

**Well Done Red Adventurers!**

## Lateness



### Week Beginning 18<sup>th</sup> June

<b>Discoverers</b>	<b>3 children late</b>
<b>Red Adventurers</b>	<b>3 children late</b>
<b>Yellow Adventurers</b>	<b>2 children late</b>
<b>Explorers</b>	<b>1 child late</b>
<b>Pioneers</b>	<b>2 children late</b>

Last week there were 17 instances of lateness by 11 children and **5 hours and 56 minutes** of learning time were lost due to lateness.

Please remember that you must inform us if your child is unwell and is unable to attend school. Please contact us before 9:15am. You can phone us 023 80 385122, use the ParentMail app or email us at

[southampton@hopecommunityschool.org](mailto:southampton@hopecommunityschool.org)

**Please remember good attendance and punctuality are really important!**

Hope Community School  
Central Hall, St Mary Street, Southampton, SO14 1NF  
Principal: Mr Steve Wright  
Tel: 02380 385122  
E: [Southampton@hopecommunityschool.org](mailto:Southampton@hopecommunityschool.org)  
W. [www.hopecommunityschool.org](http://www.hopecommunityschool.org)