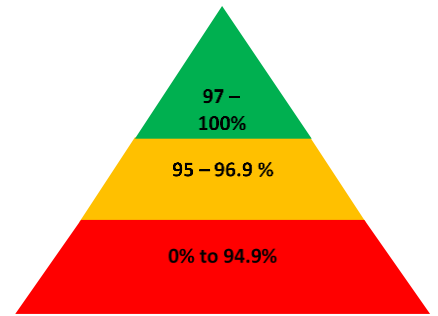


HOPE

COMMUNITY SCHOOL
SOUTHAMPTON

Newsletter

11th June 2021



Important dates

June

- 21st – Class photo
- 22nd – New Year R- Stay and Play Transition Afternoons 3.30-4.15pm
- 23rd – New Year R – Parents information evening 6.00-7.00pm
- 30th - New Year R Stay and Play Transition Afternoons 3.30-4.15pm

July

- 23rd – **School closes at 13:30.** End of summer term.

Next week is week 2 on the lunch menu.



Now that it is lovely and warm, please could you bring in a labelled water bottle every day and put sun cream on your child before they come to school.

Christian value of our fortnight

This week children have been learning about the Christian value of determination which is deciding it is worth it to finish what you have started.

During the week children have considered examples of people who have been determined to finish things – whether that is a running race, a challenging job or some hard work. They finished the week by thinking about how Jesus was determined to help people.

This week's Lovely Hat winners

- Discoverer – Ethan**
- Red Adventurer – Nelson**
- Yellow Adventurer – Lucia-Rose**
- Explorer – Maya**
- Pioneer – Alana**

New Breakfast and After School Club

HOPE COMMUNITY SCHOOL, CENTRAL HALL
ST. MARY STREET, SOUTHAMPTON. SO14 1NF

**OPENING MONDAY 6TH
SEPTEMBER 2021**

in partnership with

creative
Children's Ltd

www.creativekidz.org.uk
02380455699
admin@creativekidz.org.uk

Creative Kidz are opening on Monday 6th September 2021.

Joining information and the price list were sent via Parentmail earlier this week.

Discoverers had an amazing time at Manor Farm on Wednesday which linked with the children's topic of "Down on the farm". They learnt about farm animals and saw what happens on a real farm. They had a guided tour of the farm and had an opportunity to feed some animals.



Reminders and Requests

Symptoms of COVID-19

New continuous cough



High temperature



Loss of, or change in, sense of taste or smell



If you have any of these symptoms, get tested

Please do not send your child into school **if they are or anyone in your household displays any COVID-19 Symptoms**. The symptomatic household member must book a test <https://www.gov.uk/get-coronavirus-test>. Please inform the school of the child's absence.

School Attendance Matters!



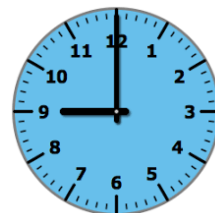
Week Beginning 24th May

Discoverers	97.6%
Red Adventurers	95.3%
Yellow Adventurers	93.8%
Explorers	100%
Pioneers	96.4%

Whole School 96.8%

Well Done Explorers!

Lateness



Week Beginning 24th May

Discoverers	3 children late
Red Adventurers	4 children late
Yellow Adventurers	1 child late
Explorers	1 child late
Pioneers	2 children late

Last week there were 13 instances of lateness by 11 children and **3 hours and 29 minutes** of learning time were lost due to lateness.

Please remember that you must inform us if your child is unwell and is unable to attend school. Please contact us before 9:15am. You can phone us 023 80 385122, use the ParentMail app or email us at southampton@hopecommunityschool.org

Please remember good attendance and punctuality are really important!

Hope Community School
Central Hall, St Mary Street, Southampton, SO14 1NF
Principal: Mr Steve Wright
Tel: 02380 385122
E: southampton@hopecommunityschool.org
W. www.hopecommunityschool.org