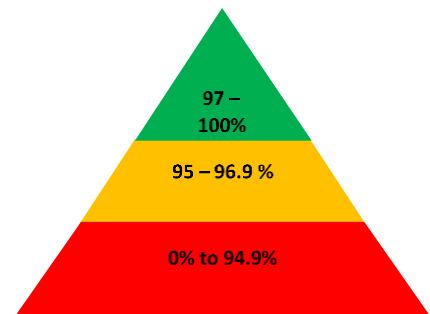




**HOPE**  
COMMUNITY SCHOOL  
SOUTHAMPTON

# Newsletter

## 28<sup>th</sup> May 2021



### Important dates

#### May

31<sup>st</sup> – 6<sup>th</sup> June – half term holidays

#### June

7<sup>th</sup> – Children back to school

9<sup>th</sup> – Year R Manor Farm School Trip

21<sup>st</sup> – Class photo

22<sup>nd</sup> – New Year R- Stay and Play Transition Afternoons

3.30-4.15pm

23<sup>rd</sup> – New Year R – Parents information evening 6.00-

7.00pm

30<sup>th</sup> - New Year R Stay and Play Transition Afternoons

3.30-4.15pm

#### July

23<sup>rd</sup> – **School closes at 13:30.** End of summer term.

*Next week is week 1 on the lunch menu.*

We all hope that everyone has enjoyable May half term. If however; your child or household member develops Covid-19 symptoms during the holidays please arrange a PCR test. **If the result is positive please contact the school office via email**

**at [southampton@hopecommunityschool.org](mailto:southampton@hopecommunityschool.org).**

We will then contact any children or members of staff they may have been in contact with if needed. Thank you for your help in this matter as we all want everyone to stay safe & well.

### Christian value of our fortnight

This week children have been learning about the Christian value of wisdom which is finding out what you should do and doing it.

The children have been thinking about Wisdom again this week. They have been particularly considering how to make wise choices when out and about. They have thought about the Green Cross Code and Bike Safety.

### This week's Lovely Hat winners

**Discoverer – Angel**

**Red Adventurer – Aiza**

**Yellow Adventurer – Sofia**

**Explorer – Alexia**

**Pioneer – J-J**

**Creative Kidz are going to be starting a before and after school club provision in September 2021. If you are interested in your child attending please use the link to register –**

**<https://creativekidz.kidsclubhq.co.uk/cust#/auth>**

**It is highly important to register before the 1st June 2021 to ensure this provision can take place.**

Over the last few days we have noticed an increase in nut related foods ... to **remind** all of our parents and carers that we are a completely **nut free school**.



## Reminders and Requests

### Symptoms of COVID-19

New continuous cough



High temperature



Loss of, or change in, sense of taste or smell



**If you have any of these symptoms, get tested**

Please do not send your child into school **if they are or anyone in your household displays any COVID-19 Symptoms**. The symptomatic household member must book a test <https://www.gov.uk/get-coronavirus-test>. Please inform the school of the child's absence.

## School Attendance Matters!

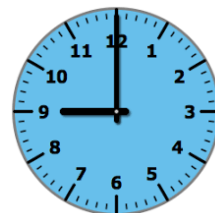


### Week Beginning 17th May

<b>Discoverers</b>	<b>94.8%</b>
<b>Red Adventurers</b>	<b>100.0%</b>
<b>Yellow Adventurers</b>	<b>97.1%</b>
<b>Explorers</b>	<b>98.9%</b>
<b>Pioneers</b>	<b>95.0%</b>
 <b>Whole School</b>	 <b>97.3%</b>

**Well Done Red Adventurers!**

## Lateness



### Week Beginning 17th May

<b>Discoverers</b>	<b>0 children late</b>
<b>Red Adventurers</b>	<b>2 children late</b>
<b>Yellow Adventurers</b>	<b>3 children late</b>
<b>Explorers</b>	<b>0 children late</b>
<b>Pioneers</b>	<b>1 child late</b>

Last week there were 6 instances of lateness by 6 children and **1 hours and 4 minutes** of learning time were lost due to lateness.

Please remember that you must inform us if your child is unwell and is unable to attend school. Please contact us before 9:15am. You can phone us 023 80 385122, use the ParentMail app or email us at [southampton@hopecommunityschool.org](mailto:southampton@hopecommunityschool.org)

**Please remember good attendance and punctuality are really important!**

Hope Community School  
Central Hall, St Mary Street, Southampton, SO14 1NF  
Principal: Mr Steve Wright  
Tel: 02380 385122  
E: [southampton@hopecommunityschool.org](mailto:southampton@hopecommunityschool.org)  
W. [www.hopecommunityschool.org](http://www.hopecommunityschool.org)