

### Important dates

#### May

- 24<sup>th</sup> – Year 1 Hampshire Fire Visit
- 24<sup>th</sup> – Year 2- Titanic Dress up Day
- 31<sup>st</sup> – 6<sup>th</sup> June – half term holidays

#### June

- 7<sup>th</sup> – Children back to school
- 8<sup>th</sup> – Year R Manor Farm School Trip
- 21<sup>st</sup> – Class photo

#### July

- 23<sup>rd</sup> – School closes at 13:30. End of summer term.

*Next week is week 3 on the lunch*

Creative Kidz are going to be starting a before and after school club provision in September 2021. If you are interested in your child attending please use the link to register –

<https://creativekidz.kidsclubhq.co.uk/cust#/auth>

**It is highly important to register before the 1st June 2021 to ensure this provision can take place.**

### Christian value of our fortnight

This week children have been learning about the Christian value of wisdom which is finding out what you should do and doing it.

We have been thinking about wisdom and making wise choices this week. Being wise is all about knowing the best choice and doing it. In our bible story this week we looked at how Joshua made a seemingly silly choice, but because it was what God asked him to do it was actually the most wise thing he could do.

### This week's Lovely Hat winners

- Discoverer – Clara**
- Red Adventurer – Shayan**
- Yellow Adventurer – Jayden**
- Explorer – Janae**
- Pioneer – Blake**



### Explorers Music Lessons

Year 2 have started their recorder lessons. The children are being taught to read music and learning about tempo and pitch as well as dynamics.

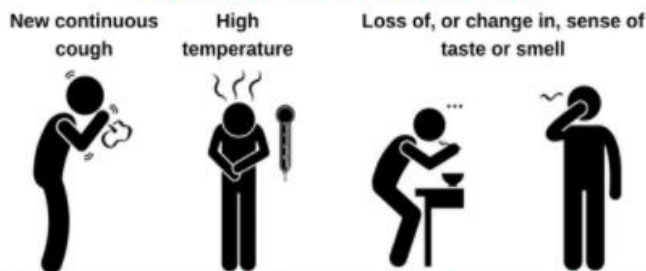
They will be performing their new skills in a concert in the summer term so keep your eyes out for this date.

Discoverers are in need of more junk for model making. Please could we have anything suitable, but we ask for NO large cereal boxes or large plastic bottles. Please be reassured we will quarantine items before using them.



### Reminders and Requests

### Symptoms of COVID-19



**If you have any of these symptoms, get tested**

Please do not send your child into school **if they are or anyone in your household displays any COVID-19 Symptoms**. The symptomatic household member must book a test <https://www.gov.uk/get-coronavirus-test>. Please inform the school of the child's absence.

### School Attendance Matters!



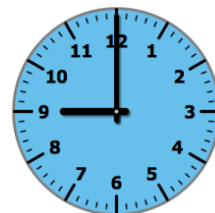
#### Week Beginning 10<sup>th</sup> May

<b>Discoverers</b>	<b>92.7%</b>
<b>Red Adventurers</b>	<b>90.1%</b>
<b>Yellow Adventurers</b>	<b>98.6%</b>
<b>Explorers</b>	<b>93.7%</b>
<b>Pioneers</b>	<b>87.2%</b>

Whole School **92.4%**

**Well Done Yellow Adventurers!**

### Lateness



#### Week Beginning 10<sup>th</sup> May

<b>Discoverers</b>	<b>3 children late</b>
<b>Red Adventurers</b>	<b>4 children late</b>
<b>Yellow Adventurers</b>	<b>0 children late</b>
<b>Explorers</b>	<b>3 children late</b>
<b>Pioneers</b>	<b>2 children late</b>

Last week there were 12 instances of lateness by 12 children and **2 hours and 27 minutes** of learning time were lost due to lateness.

**Please remember that you must inform us if your child is unwell and is unable to attend school.** Please contact us before 9:15am. You can phone us 023 80 385122, use the ParentMail app, Class Dojo or email us at [southampton@hopecommunityschool.org](mailto:southampton@hopecommunityschool.org)

**Please remember good attendance and punctuality are really important!**

Hope Community School  
 Central Hall, St Mary Street, Southampton, SO14 1NF  
 Principal: Mr Steve Wright  
 Tel: 02380 385122  
 E: [Southampton@hopecommunityschool.org](mailto:Southampton@hopecommunityschool.org)  
 W. [www.hopecommunityschool.org](http://www.hopecommunityschool.org)