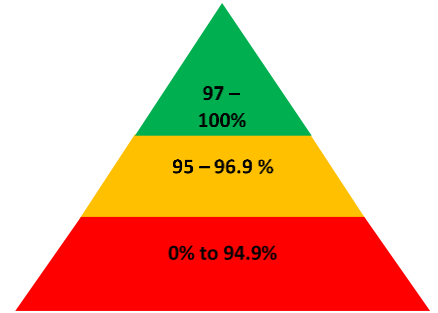


HOPE

COMMUNITY SCHOOL
SOUTHAMPTON

Newsletter

14th May 2021



Important dates

May

21st – Year 1 school trip to Marwell Zoo

24th – Year 1 Hampshire Fire Visit

31st – 6th June – half term holidays

June

7th – Children back to school

21st – Class photo

July

23rd – School closes at 13:30. End of summer term.

Next week is week 2 on the lunch

As a school we have a legal authority to request Penalty Notices to parents who do not ensure their child is attending school. You will be issued a fine for the following:

- Your child has unauthorised absence for 10 or more sessions (a session is a morning or afternoon) over the course of 8 weeks, these do not need to be consecutive days.
- You take your child on holiday during term time for 10 or more session.
- Your child arrives late after 9:15 on 10 occasions over an 8 week period.

Christian value of our fortnight

This week children have been learning about the Christian value of 'honesty' which is choosing to be truthful in whatever you say and do.

We have also been considering the feeling of being afraid. Children have discussed what makes them afraid and how to deal with those emotions. We talked about how important it is to talk about our feels with a trusted adult.

This week's Lovely Hat winners

Discoverer – Carys

Red Adventurer – Nylah

Yellow Adventurer – Shayna

Explorer – Kian

Pioneer – Rachel

If you have changed any of your contact details (particular your phone numbers) please make sure that the office have your up to date information so that we can contact you should your child become unwell.



We have bags of food available at school, which have been donated by [The Big Difference](#), please email southampton@hopecommunityschool.org if you would like one.



Reminders and Requests

Symptoms of COVID-19

New continuous cough



High temperature



Loss of, or change in, sense of taste or smell



If you have any of these symptoms, get tested

Please do not send your child into school **if they are or anyone in your household displays any COVID-19 Symptoms**. The symptomatic household member must book a test <https://www.gov.uk/get-coronavirus-test>. Please inform the school of the child's absence.

School Attendance Matters!



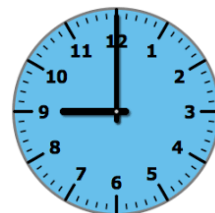
Week Beginning 3rd May

Discoverers	95.0%
Red Adventurers	99.0%
Yellow Adventurers	98.3%
Explorers	94.8%
Pioneers	92.6%

Whole School **96.0%**

Well Done Red Adventurers!

Lateness



Week Beginning 3rd May

Discoverers	4 children late
Red Adventurers	4 children late
Yellow Adventurers	1 child late
Explorers	2 children late
Pioneers	2 children late

Last week there were 16 instances of lateness by 13 children and **5 hours and 10 minutes** of learning time were lost due to lateness. **This means we have lots of 5 hours of 10 minutes of learning time** 😞

Please remember that you must inform us if your child is unwell and is unable to attend school. Please contact us before 9:15am. You can phone us 023 80 385122, use the ParentMail app or email us at southampton@hopecommunityschool.org

Please remember good attendance and punctuality are really important!

Hope Community School
Central Hall, St Mary Street, Southampton, SO14 1NF
Principal: Mr Steve Wright
Tel: 02380 385122
E: southampton@hopecommunityschool.org
W. www.hopecommunityschool.org