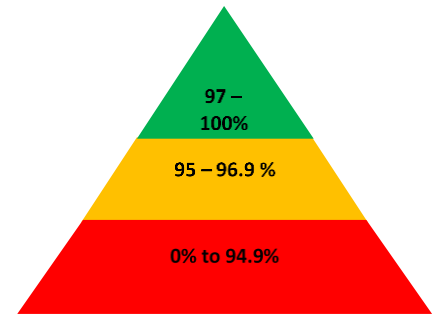


HOPE
COMMUNITY SCHOOL
SOUTHAMPTON
Newsletter
30th April 2021



Important dates

May

3rd – Bank Holiday. Children not in school

11th – Parents' consultations

13th – Parents' consultations

31st – 6th June – half term holidays

June

7th – Children back to school

July

23rd – School closes at 13:30. End of summer term.

Next week is week 3 on the lunch menu.

Important reminders

School is closed on Monday as this is a Bank Holiday.



Christian value of our fortnight

This week children have been learning about the Christian value of 'friendship' which is spending time with someone you trust and enjoy.

The children thought about the story in the bible where Jesus not only spent time with children, but actually told adults that they needed to behave more like them! I wonder what he meant by that?

This week's Lovely Hat winners

Discoverer – James

Red Adventurer – Victoria

Yellow Adventurer – Keyla

Explorer – Joshua

Pioneer – Zane

Whilst everyone is fortunate to have the opportunity to have Lateral Flow Tests (LFT) as part of the twice asymptomatic weekly testing of adults, **if your child has symptoms then you must book for them to have a PCR test.** The easiest way to do this is <https://www.gov.uk/get-coronavirus-test>. We are not able to accept a negative LFT result as these are designed for asymptomatic testing.

Many thanks for your co-operation 😊



Our parents' consultations (via telephone) are to be held on **Tuesday 11th May (15.30 – 18.00)** or **Thursday 13th May (15.30 – 18.00)**. Letters will be sent home next week, so please look out for these.

Reminders and Requests

Symptoms of COVID-19

New continuous cough



High temperature



Loss of, or change in, sense of taste or smell



If you have any of these symptoms, get tested

Please do not send your child into school **if they are or anyone in your household displays any COVID-19 Symptoms**. The symptomatic household member must book a test <https://www.gov.uk/get-coronavirus-test>. Please inform the school of the child's absence.

School Attendance Matters!



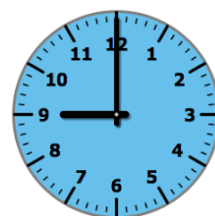
Week Beginning 19th April

Discoverers	94.7%
Red Adventurers	98.1%
Yellow Adventurers	96.4%
Explorers	95.8%
Pioneers	96.2%

Whole School **96.2%**

Well Done Red Adventurers!

Lateness



Week Beginning 19th April

Discoverers	2 children late
Red Adventurers	1 child late
Yellow Adventurers	2 children late
Explorers	2 children late
Pioneers	1 child late

Last week there were 8 instances of lateness by 8 children and of 3 hours & 27 minutes learning time were lost due to lateness.

Please remember that you must inform us if your child is unwell and is unable to attend school. Please contact us before 9:15am. You can phone us 023 80 385122, use the ParentMail app or email us at southampton@hopecommunityschool.org

Please remember good attendance and punctuality are really important!

Hope Community School
Central Hall, St Mary Street, Southampton, SO14 1NF
Principal: Mr Steve Wright
Tel: 02380 385122
E: Southampton@hopecommunityschool.org
W. www.hopecommunityschool.org