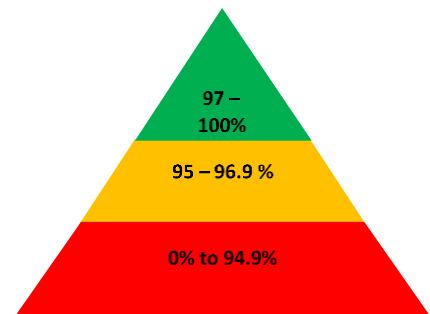


HOPE
COMMUNITY SCHOOL
SOUTHAMPTON
Newsletter
22nd April 2021



Important dates

May

3rd – Bank Holiday. Children not in school

31st – 6th June – half term holidays

June

7th – Children back to school

July

23rd – School closes at 13:30. End of summer term.

*Next week is week 2
on the lunch menu.*

Important reminders

Parking

There are a number of parents who park their cars in the layby next to the playground gate. Please could we remind you that not only is it illegal (double yellow lines) and liable to a parking fine, it also causes risk to the children entering and leaving school. Where possible, could you walk to school and if this is not possible, park further afield and walk the rest of the way. Many thanks

Christian value of our fortnight

This week children have been learning about the Christian value of 'friendship' which is spending time with someone you trust and enjoy.

The children have thought about a story in the bible that shows us that God is on our side and they have also considered what makes them happy. On Friday it was St. George's day, so the children learnt about what made him special.

This week's Lovely Hat winners

Discoverer – Alexander

Red Adventurer – Daniel

Yellow Adventurer – Alexis

Explorer – Ayesha

Pioneer – Ruby

Whilst everyone is fortunate to have the opportunity to have Lateral Flow Tests (LFT) as part of the twice asymptomatic weekly testing of adults, **if your child has symptoms then you must book for them to have a PCR test.** The easiest way to do this is <https://www.gov.uk/get-coronavirus-test>. We are not able to accept a negative LFT result as these are designed for asymptomatic testing.

Many thanks for your co-operation 😊

If you have changed any of your contact details (particular your phone numbers) please make sure that the office have your up to date information so that we can contact you should your child become unwell.



Reminders and Requests

Symptoms of COVID-19

New continuous cough



High temperature



Loss of, or change in, sense of taste or smell



If you have any of these symptoms, get tested

Please do not send your child into school **if they are or anyone in your household displays any COVID-19 Symptoms**. The symptomatic household member must book a test <https://www.gov.uk/get-coronavirus-test>. Please inform the school of the child's absence.

School Attendance Matters!



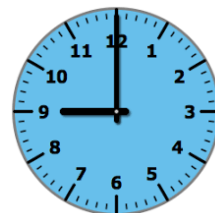
Week Beginning 29th March

Discoverers	97.6%
Red Adventurers	99.0%
Yellow Adventurers	93.1%
Explorers	93.1%
Pioneers	88.3%

Whole School 92.2%

Well Done Red Adventurers!

Lateness



Week Beginning 29th March

Discoverers	2 children late
Red Adventurers	1 child late
Yellow Adventurers	1 child late
Explorers	0 children late
Pioneers	0 children late

Last week there were 4 instances of lateness by 4 children and of 1 hour learning time were lost due to lateness.

Please remember that you must inform us if your child is unwell and is unable to attend school. Please contact us before 9:15am. You can phone us 023 80 385122, use the ParentMail app or email us at southampton@hopecommunityschool.org

Please remember good attendance and punctuality are really important!

Hope Community School
Central Hall, St Mary Street, Southampton, SO14 1NF
Principal: Mr Steve Wright
Tel: 02380 385122
E: southampton@hopecommunityschool.org
W. www.hopecommunityschool.org