

Important dates

Easter holidays – 2nd
- 18th April

Inset day (school closed) – 19th April

After the Easter Holidays it is week 1 on summer lunch menu.

We all hope that everyone has a very happy and healthy Easter. If however; your child or household member develops Covid-19 symptoms during the holidays please arrange a test. **If the result is positive please contact the school office via email at southampton@hopecommunityschool.org.** We will then contact any children or members of staff they may have been in contact with if needed. Thank you for your help in this matter as we all want everyone to stay safe & well.

Christian value of our fortnight

During this week we have been thinking about the Easter story and how people around the world celebrate this important Christian celebration. It is a time when Christians celebrate their belief that Jesus rose again, beating death and providing a way for people to become friends with God again. We hope you have a blessed and peaceful Easter break!

This week's Lovely Hat winners

- Discoverer – Lily-Rose**
- Red Adventurer – Miriam**
- Yellow Adventurer – Scarlett**
- Explorer – Ajani**
- Pioneer – Jasmine**

INSET DAYS

**19th
April
2021**

Whilst everyone is fortunate to have the opportunity to have Lateral Flow Tests (LFT) as part of the twice asymptomatic weekly testing of adults, **if your child has symptoms then you must book for them to have a PCR test.** The easiest way to do this is <https://www.gov.uk/get-coronavirus-test>. We are not able to accept a negative LFT result as these are designed for asymptomatic testing. Many thanks for your co-operation 😊

🐰🥚🐣 Easter Competition 🐣🥚🐰

We have a special Easter Egg-stravaganza for all children this Sunday as part of our New Community Easter Live Service on YouTube and we'd love children to enter too!

You could win some of these Easter goodies including a family Easter Hamper and £25 Amazon Voucher..... Enter by drawing a picture, making something or using your creativity and imagination to take a photo that expresses "New Life". There will be 3 main prizes for most effort, most excellent and most colourful entry.....as well as some runners up goodies too.

Get thinking, making and creating, and join us for the Easter Livestream on Sunday Morning from 10am – the number to whatsapp/text your entry will be on the screen and we'll announce the winners on Sunday Morning as part of the service. www.newcommunity.org.uk.

Reminders and Requests

Symptoms of COVID-19



If you have any of these symptoms, get tested

Please do not send your child into school **if they are or anyone in your household displays any COVID-19 Symptoms**. The symptomatic household member must book a test <https://www.gov.uk/get-coronavirus-test>. Please inform the school of the child's absence.

School Attendance Matters!



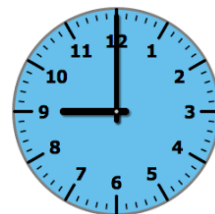
Week Beginning 22nd March

Discoverers	93.7%
Red Adventurers	99.5%
Yellow Adventurers	95.8%
Explorers	92.9%
Pioneers	90.8%

Whole School **94.6%**

Well Done Red Adventurers!

Lateness



Week Beginning 22nd March

Discoverers	1 child late
Red Adventurers	3 children late
Yellow Adventurers	1 child late
Explorers	1 child late
Pioneers	1 child late

Last week there were 7 instances of lateness by 7 children and of 1 hour 33 minutes learning time were lost due to lateness.

Please remember that you must inform us if your child is unwell and is unable to attend school. Please contact us before 9:15am. You can phone us 023 80 385122, use the ParentMail app or email us at southampton@hopecommunityschool.org

Please remember good attendance and punctuality are really important!

Hope Community School
Central Hall, St Mary Street, Southampton, SO14 1NF
Principal: Mr Steve Wright
Tel: 02380 385122
E: Southampton@hopecommunityschool.org
W. www.hopecommunityschool.org