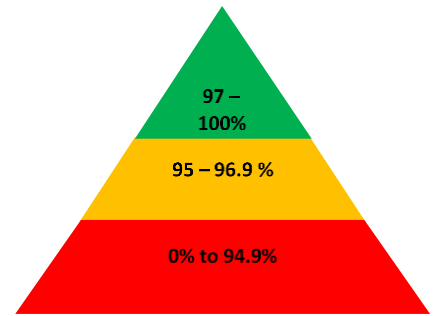




Newsletter

20th November 2020



Important dates

November

24th – Closing date to order school photos

December

10th – **Inset day. Children not in school**

11th – Christmas Jumper day and Christmas dinner

18th – **School closes at 13:30**. Christmas non-school uniform day.

19th – 3rd Jan – Christmas holidays

January

4th – Inset day children not in school

5th – Children back to school

Next week is week 1 on the lunch menu.

Important reminders

The new national restrictions state that people must not meet socially (there are a few exceptions) and that people should minimise time spent outside their home. Along with other some other schools in Southampton **we encourage the use of masks** dropping off and picking up.

Parking

There are a number of parents who park their cars in the layby next to the playground gate. Whilst I understand that this is convenient I would like to remind you that not only is it illegal (double yellow lines) and liable to a parking fine, it also causes risk to the children entering and leaving school. Where possible, could you walk to school and if this is not possible, park further afield and walk the rest of the way.

Christian value of our fortnight

This week children have been learning about the Christian value of 'Reliability'. This is showing that we can be trusted to do what is needed.

We started the week wearing odd socks which was not only fun but also a great reminder that this week has been 'Anti-Bullying week'. Children have been thinking about what bullying is and how to deal with bullying if they ever experience it. It is crucial that children accept and celebrate differences. We have also continues to consider the value of reliability – considering how we build trust and how in the bible it says that God helps us to become more reliable.

This week's Lovely Hat winners

Discoverer – Marliya

Red Adventurer – Shayan

Yellow Adventurer – Nma

Explorer – York

Pioneer – Alana

INSET DAYS

10th December 2020

4th January 2021

19th April 2021

Thank you to the children and families for their Children in need donations as a school we raised £126!



**School Photograph Order Closing Date
Tuesday 24th November**

Please be advised if you have NOT yet placed your School Photograph order, the order closing date is Tuesday 24th November. Please either return your Order to the School or visit www.smileYellow.com using the passwords on the Proof card



Reminders and Requests

Symptoms of COVID-19



If you have any of these symptoms, get tested

Please do not send your child into school if they are or anyone in your household displays any COVID-19 Symptoms. The symptomatic household member must book a test nhs.uk/coronavirus or call 119. Please inform the school of the child's absence.

**School Attendance
Matters!**



Week Beginning 9th November

Discoverers 99.3%

Red Adventurers 98.1%

Yellow Adventurers 96.8%

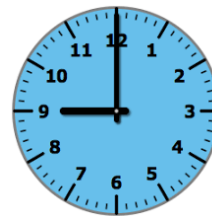
Explorers 97.2%

Pioneers 96.3%

Whole School 99.3%

Well Done Discoverers!

Lateness



Week Beginning 9th November

Discoverers 0 children late

Red Adventurers 2 children late

Yellow Adventurers 2 children late

Explorers 1 child late

Pioneers 2 children late

Last week there were 13 instances of lateness by 7 children and of 4 hours 2 minutes learning time were lost due to lateness.

Please remember that you must inform us if your child is unwell and is unable to attend school. Please contact us before 9:15am. You can phone us 023 80 385122, use the ParentMail app or email us at southampton@hopecommunityschool.org

Please remember good attendance and punctuality are really important!

Hope Community School
Central Hall, St Mary Street, Southampton, SO14 1NF
Principal: Mr Steve Wright
Tel: 02380 385122
E: Southampton@hopecommunityschool.org
W. www.hopecommunityschool.org