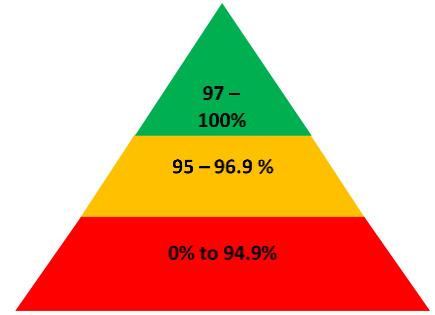




## Newsletter

6<sup>th</sup> November 2020



### Important dates

#### November

- 10<sup>th</sup> – Parents telephone consultations
- 12<sup>th</sup> – Parents telephone consultations
- 13<sup>th</sup> – Wearing spotty clothes for Children in Need

#### December

- 18<sup>th</sup> – **School closes at 13:30**. Christmas jumper day
- 19<sup>th</sup> – 3<sup>rd</sup> Jan – Christmas holidays
- 4<sup>th</sup> – Inset day children not in school
- 5<sup>th</sup> – Children back to school

**Next week is week 2 on the lunch menu.**

### Important reminders

Applications are open to apply to Hope Community School for Children born between 1 September 2016 and 31 August 2017 to start school in the school year beginning September 2021. This is important for parents who already have children attending Hope Community School to apply for their siblings place. Please use the link to apply-  
<https://www.southampton.gov.uk/schools-learning/find-school/apply-school/>

### Christian value of our fortnight

During the week before half term we started considering the Christian value of listening. During our Lovely Hat Collective Mr Wright talked about how it is says in the bible that God is always listening to us. He cares about what we think about and what we need and is powerful enough to make a difference.

### This week's Lovely Hat winners

Discoverer – Phebe

Red Adventurer – Sophie

Yellow Adventurer – Sofia

Explorer – Ava-Mae

Pioneer – Lya

### INSET DAYS

4<sup>th</sup> January 2021

19<sup>th</sup> April 2021

On Friday 13<sup>th</sup> November we are supporting Children in Need. For a donation of £1 children can come to school wearing anything spotty (no school uniform needed).



*If you have changed any of your contact details (particular your phone numbers) please make sure that the office have your up to date information so that we can contact you should your child become unwell.*



## Reminders and Requests

### Symptoms of COVID-19



**If you have any of these symptoms, get tested**

Please do not send your child into school if they are or anyone in your household displays any COVID-19 Symptoms. The symptomatic household member must book a test [nhs.uk/coronavirus](https://nhs.uk/coronavirus) or call 119. Please inform the school of the child's absence.

## School Attendance Matters!

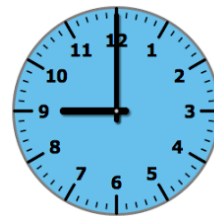


### Week Beginning 19<sup>th</sup> October

<b>Discoverers</b>	<b>89.0%</b>
<b>Red Adventurers</b>	<b>98.5%</b>
<b>Yellow Adventurers</b>	<b>99.1%</b>
<b>Explorers</b>	<b>96.3%</b>
<b>Pioneers</b>	<b>91.7%</b>
<b>Whole School</b>	<b>94.6%</b>

**Well Done Yellow Adventurers!**

## Lateness



### Week Beginning 19<sup>th</sup> October

<b>Discoverers</b>	<b>2 children late</b>
<b>Red Adventurers</b>	<b>3 children late</b>
<b>Yellow Adventurers</b>	<b>1 child late</b>
<b>Explorers</b>	<b>2 children late</b>
<b>Pioneers</b>	<b>4 children late</b>

Last week there were **15** instances of lateness by **12** children and **7 hours and 29 minutes** of learning time were lost due to lateness.

Please remember that you must inform us if your child is unwell and is unable to attend school. Please contact us before 9:15am. You can phone us 023 80 385122, use the ParentMail app or email us at [southampton@hopecommunityschool.org](mailto:southampton@hopecommunityschool.org)

**Please remember good attendance and punctuality are really important!**

Hope Community School  
 Central Hall, St Mary Street, Southampton, SO14 1NF  
 Principal: Mr Steve Wright  
 Tel: 02380 385122  
 E: [Southampton@hopecommunityschool.org](mailto:Southampton@hopecommunityschool.org)  
 W. [www.hopecommunityschool.org](http://www.hopecommunityschool.org)