



**HOPE**  
COMMUNITY SCHOOL  
SOUTHAMPTON  
Newsletter  
13<sup>th</sup> March 2020

### Important dates

#### March

17<sup>th</sup> & 19<sup>th</sup> – Parent/Carer consultations  
24<sup>th</sup> – 30<sup>th</sup> – Book fair. More information to follow

#### April

3<sup>rd</sup> – Finish at 13:30 for Easter holidays  
4<sup>th</sup> (until 19<sup>th</sup>) – Easter holidays

#### May

8<sup>th</sup> – May bank holiday – school closed

### School building news

Mr Wright met with Department for Education and representatives from the Local Council to discuss expanding space in Central hall whilst work continues behind the scenes in securing our permanent building.

### Christian value of the fortnight

This week children have been learning about the Christian value of 'Faith' which is believing in what you can't see by what you can see.

This week we have thought about how if you are not sure about things, it can make you feel worried. However in the bible, it says that whatever happens, God is with us. As you know facing difficulties with the support of others is always better than being on your own.

### This week's Lovely Hat winners

**Blue Adventurer – Reuben**

**Green Adventurer – Jude**

**Explorer – Viktorja**

**Pioneer – Zher**

Please remember everyone is welcome to attend our Lovely Hat celebration collective every Friday at 9am

### INSET DAYS

**1<sup>st</sup> June – School**

**20<sup>th</sup> July - School**

Please join us in Room 4 at 9 (after drop off) every Monday for our coffee morning. This is an informal way of getting to know everyone.

### Message from Adventurers

- Junk modelling, especially small boxes and tubes for year R please
- NO juice in water bottles, only water. Juice will be emptied and replaced with water
- Parents eve, please be prompt as we have limited time for each parent, lists outside the classroom.
- Children loved science day and a big hit was the "make a rainbow" experiment using skittles sweets and warm water. Details here...  
<https://www.youtube.com/watch?v=BAAr7EvqWPK>

In the event that school is forced to close due to the Coronavirus we will inform you by email, through our website and Facebook page. We will let you know how children will be able to continue with the learning. Please be reassured that washing of hands happen throughout the day.

Therefore please could you ensure we have your correct email address. You can do this by emailing us at [southampton@hopecommunityschool.org](mailto:southampton@hopecommunityschool.org)

We had a really exciting British Science day on Wednesday. The children took part in some amazing experiments using Skittles, Mentos, fizzy drinks and bottles of water! Adventurers planted marigolds. Explorers created games for children who might be blind or unable to walk. Pioneers made posters on the theme of Diversity for British Science Association.

We also had a fruit kebab fundraiser for the charity JDRF who supports people with type 1 diabetes. Thanks so much for all your donations. We raised £50!

## School Attendance Matters!



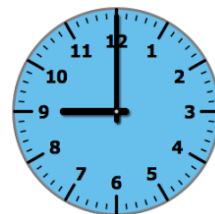
### Week Beginning 2<sup>nd</sup> March

Blue Adventurers	96.9%
Green Adventurers	98.5%
Explorers	91.0%
Pioneers	92.1%

Whole School 94.4%

**Well Done Green Adventurers!**

## Lateness



### Week Beginning 2<sup>nd</sup> March

Blue Adventurers	2 children late
Green Adventurers	3 children late
Explorers	2 children late
Pioneers	4 children late

Last week there were **22** instances of lateness by **11** children and **6 hours and 26 minutes** of learning time were lost due to lateness.

Please remember that you must inform us if your child is unwell and is unable to attend school. Please contact us before 9:15am. You can phone us 023 80 385122 or email us at

[southampton@hopecommunityschool.org](mailto:southampton@hopecommunityschool.org)

**Please remember good attendance and punctuality are really important!**

Hope Community School  
Central Hall, St Mary Street, Southampton, SO14 1NF  
Principal: Mr Steve Wright  
Tel: 02380 385122  
E: [southampton@hopecommunityschool.org](mailto:southampton@hopecommunityschool.org)  
W. [www.hopecommunityschool.org](http://www.hopecommunityschool.org)