

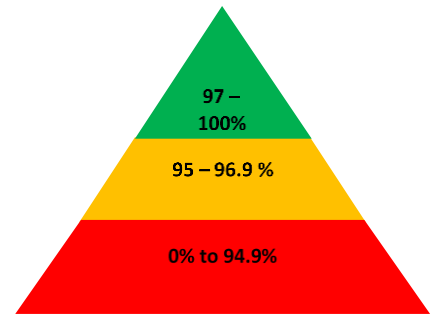


# HOPE

COMMUNITY SCHOOL  
SOUTHAMPTON

## Newsletter

### 7th February 2020



### Important dates

#### February

11<sup>th</sup> – Year 1 Phonics Morning  
17<sup>th</sup> to 21<sup>st</sup> – Half term holidays

#### March

5<sup>th</sup> – World Book day – children are invited to dress up as a character from their favourite book. We would be grateful for a £1 donation which will be put towards new books for our class libraries

As we have lots of information to share with you, there is often not enough space here, so this is included in the email sent to you on a Friday afternoon. It is really therefore really important for this email to be read, even if you have read this newsletter.

### Important reminders

- Class doors closes prompt at 9am. If you arrive after this time, please go to the office to be signed in.
- A gentle reminder, please could you ensure you pick up your child on time at the end of the day.
- Please do not bring hot drinks to or use mobile phones during our lovely hat collective.

Thank you for supporting these few simple things that make school life so much easier.

### Christian value of our fortnight

This week children have been learning about the Christian value of 'Gratitude' which is letting others know you see how they've helped you.

This week we have been thinking about all of the different people who do things to help us. We have thought about how we might show gratitude to them. Children have written thank you cards and thought of other things they could do.

### This week's Lovely Hat winners

Blue Adventurer – Ethan

Green Adventurer – Alex S

Explorer – Ava-Mae

Pioneer – Laith

Please remember everyone is welcome to attend our Lovely Hat celebration collective every Friday at 9am

### INSET DAYS

1<sup>st</sup> June – School

20<sup>th</sup> July - School



May we please ask that you do not leave scooters and bikes around the building, as they become a trip hazard. There is a designated area in the playground in which to leave your child's bike or scooter. Thank you for your cooperation in helping to keep children safe.

### Year 1 Phonics Morning

All parents of our Explorer children are invited to attend our Phonics drop in morning on Tuesday 11<sup>th</sup> February. The morning will start up in the classroom with your children from 9-9.30am, followed by refreshments and a short presentation from 9.30-10am.



### Reminders and Requests

- Adventurers would appreciate any empty egg boxes for an upcoming project.
- Adventurers PE will be every Wednesday morning. All children require a PE kit. Please bring one in for your child if you have not already. Adventurers have been having PE outdoors with our new equipment so not changing due to weather but are beginning a course of indoor sessions where kit is essential.
- We would love any donations of good quality books, board games and table top puzzles/games for the children to use during wet playtimes.
- Lastly a reminder to please insure that your child is in the correct uniform every day at school, including shoes. We are seeing an increase of non-uniform within school.

### **School Attendance Matters!**



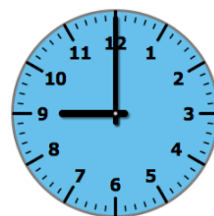
#### **Week Beginning 27<sup>th</sup> January**

<b>Blue Adventurers</b>	<b>95.2%</b>
<b>Green Adventurers</b>	<b>92.4%</b>
<b>Explorers</b>	<b>81.7%</b>
<b>Pioneers</b>	<b>97.0%</b>

**Whole School 91.5%**

**Well Done Pioneers!**

### **Lateness**



#### **Week Beginning 27<sup>th</sup> January**

<b>Blue Adventurers</b>	<b>3 children late</b>
<b>Green Adventurers</b>	<b>3 children late</b>
<b>Explorers</b>	<b>2 children late</b>
<b>Pioneers</b>	<b>5 children late</b>

Last week there were **13** instances of lateness by **13** children and **3 hours and 52 minutes** of learning time were lost due to lateness.

**This is a dramatic improvement and we are thankful for the effort involved.**

Please remember that you must inform us if your child is unwell and is unable to attend school. Please contact us before 9:15am. You can phone us 023 80 385122 or email us at

[southampton@hopecommunityschool.org](mailto:southampton@hopecommunityschool.org)

**Please remember good attendance and punctuality are really important!**

Hope Community School  
Central Hall, St Mary Street, Southampton, SO14 1NF  
Principal: Mr Steve Wright  
Tel: 02380 385122  
E: [Southampton@hopecommunityschool.org](mailto:Southampton@hopecommunityschool.org)  
W. [www.hopecommunityschool.org](http://www.hopecommunityschool.org)